

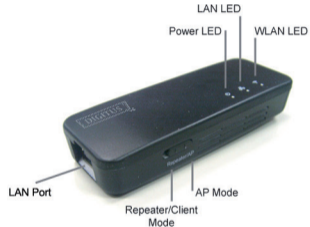
**DIGITUS**

## PORTABLE WIRELESS 150N ACCESS POINT






### Quick Installation Guide DN-70495

### LED Indicator and Button Status Description



#### LED Indicator Description:

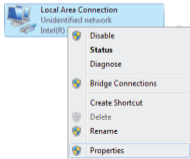
-  : Power: Indicate the power status
-  : LAN: Indicate the Ethernet connection status
-  : WLAN: Indicate the wireless connection status

#### WPS & Reset button:

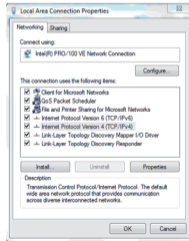
- Press 1 second to enter into WPS encryption
- Press 10 seconds to reset to default setting

## Preparing for setup: If running under Windows Vista or Windows7 systems, Please follow the below steps

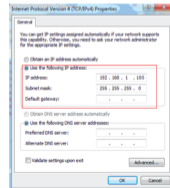
- 1** From the Start menu on your desktop, first go to Control panel, then select Network and Internet. Please go to Network and Share center to change adapter setting and then select local area connection and right-click to get into Properties.



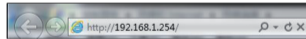
- 2** Click Internet Protocol(TCP/IPv4), and select Properties button.



- 3** In the IP address field, enter the address 192.168.1.x (x should be replaced by a number between 2 and 253, such as 101). In the Subnet mask field, enter 255.255.255.0, click confirm button and then return to last interface to click confirm for finish.



- 4** Input the website <http://192.168.1.254> with Internet explorer, and press enter to login the setting user-interface.

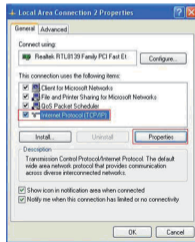


## Preparing for setup: If running under Windows XP system, Please follow the below steps

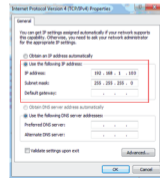
- 1** Double click the Network Neighbor from your computer desktop. Please go to local area connection. Do right-click with the mouse to enter Properties.



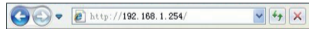
- 2** Click Internet Protocol(TCP/IPv4), and select Properties button.



- 3** In the IP address field, enter the address 192.168.1.x (x should be replaced by a number between 2 and 253, such as 101). In the Subnet mask field, enter 255.255.255.0, click confirm button and then return to last interface to click confirm for finish.

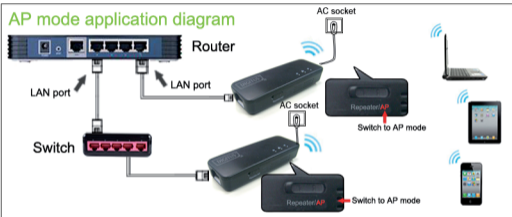


- 4** Input the website <http://192.168.1.254/> in Internet explorer address, press enter to get into setting interface.



## AP Mode

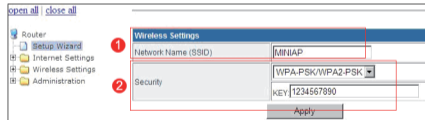
Under AP mode, DN-70495 can provide wireless access to internet by connecting DN-70495 to a router.



### AP Mode:

1. No need to setup the installation for AP mode.
2. Suitable for office, hotel, home and meeting room application.
3. Switch to AP mode, the device will be get the internet directly.
4. Converting LAN switch to WLAN easily to enjoy WiFi sharing function.

1. After entering into the setup interface, for security encryption please:
  - ① Change the SSID ( the name should be letter or digital, but no others) if necessary.
  - ② Select the encryption mode and input the password, then click Apply to finish.



2. After this setup is done, you will see the setting information from the red frame, then close the page and start to use it.



## Repeater Mode

Under the Repeater Mode, It can extend the wireless cover area and allow the other devices to connect to wireless networking

### Repeater mode application diagram



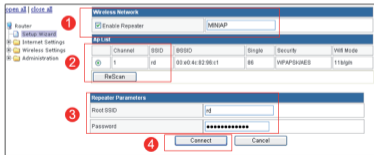
### Repeater Setup Steps:

1. Connect DN-70495 to power socket with USB power adapter or USB interface to the Notebook / Television to provide +5Vdc power input;
2. Switch to Repeater mode.

## Setup

### Step 1

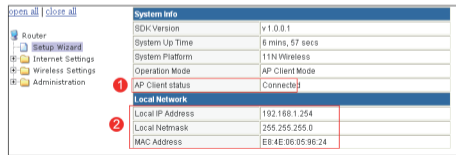
- ① Select Enable Repeater and input the repeater name if needed.
- ② Select the SSID of the wireless router/AP to connect.
- ③ Input the password for the SSID.
- ④ Click connect button, wait for a minutes to get the connection completed.



### Step 2

Below information will be shown after the setup is finished:

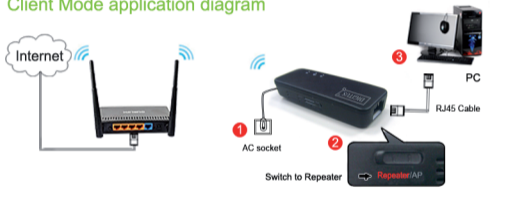
- ① Status is Connected.
- ② The information for local networking is also shown: IP address, MAC address, etc.



## Client Mode

Under the Client Mode, DN-70495 can Ethernet-enable the computer or gaming console through wireless interface.

### Client Mode application diagram



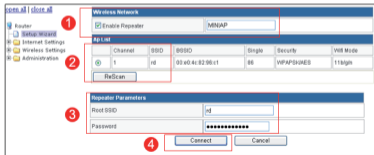
### Client mode setup steps:

1. Connect DN-70495 to power socket with USB power adapter or through USB interface to Computer / Notebook / Television.
2. Switch to Repeater mode.

## Setup

### Step 1

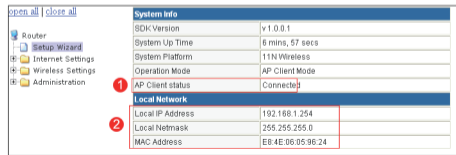
- ① Unselect to disable Repeater.
- ② Select the SSID for connection.
- ③ Input the password for the SSID.
- ④ Click connect button, and wait for a minute to get the connection completed.



### Step 2

Below information will be shown after the setup is finished:

- ① Status is connected.
- ② The information for local networking is also shown: IP address, MAC address, etc.



## Frequently Asked Questions

FAQ1: The light does not light up. Why?

1. Check if the power adapter matches 5V/500mA-2000mA.
2. Check if the USB connector is connected.

FAQ2: Why am I not able to enter the webpage (<http://192.168.1.254>)?

1. Check if the device is connected to the computer, and check if the LAN indicator is flashing.
2. Confirm whether the web browser can support Java or not.
3. Press the WPS button for 10 seconds to reset to the default setting.
4. Power Off and On DN-70495.

FAQ3: What to do when you forget the wireless password?

If you forget the wireless password, please press the WPS button for 10 seconds to reset to factory default setting.

FAQ4: Why am I not able to access the internet after configuration is finished?

Under the repeater mode:

If it cannot access internet or network is limited, please re-enter the correct SSID password. The password must be wireless router's security password.

Under AP mode:

Check if the router or switches is working normally.

Check the LAN connection is working or not.

Make sure the AP mode is set with the slide switch.

FAQ5: How much distance can the AP cover?

Usually, it can cover at least 20 meters, but this depends on specific environment and the wireless devices at the other side.